

Savour the true flavour of unique Sri Lankan Coconut...



COCONUT

www.wichy.com

A large pile of coconuts fills the background of the page. In the lower-left foreground, a portion of a wicker basket is visible, also containing coconuts. A semi-transparent brown box on the right side of the image contains the company's vision and mission statements.

Vision

Spearheading to be the leader in the manufacture and export of value added coconut based products in Sri Lanka.

Mission

To serve our customers world over with premium quality coconut based products to savour the true flavour of unique Sri Lankan Coconut, whilst observing the highest standards of business principles and ethics.



with 32 years of
experience, expertise & excellence



www.wichy.com

Processing Plants

- Homagama
- Panagoda
- Kalagedihena
- Wariyapola

About Us

SRI LANKA, known as the 'Pearl of the Indian Ocean' is a tropical island receiving bountiful sunshine and rainfall throughout the year. This island is gifted with rich soil conditions suitable for agriculture. Coconut is a prominent plantation crop in Sri Lanka and today the island has become the 5th largest coconut producer in the world.

WICHY PLANTATION COMPANY (PRIVATE) LIMITED, Sri Lanka, which was incorporated in the year 1984, pioneered the export of Coconut Milk from the island. During a long period of over 32 years, the company has progressed steadily with a spectrum of organic coconut kernel based products such as Coconut Milk, Creamed Coconut, Desiccated Coconut, Coconut Water, Coconut Juice, Pina Colada, Virgin Coconut Oil, Raw Extra Virgin Coconut Oil, Coconut Syrup, Sweetened Creamed Coconut, Coconut Flour, Coconut Vinegar and a collection of coconut based ethnic products.

WICHY'S age old in-house expertise in processing coconut kernel products is backed with modern well-equipped state-of-the-art production facilities and is committed with highly qualified and dedicated staff, which has placed the company on a firm footing in the industry. Having conformed to stringent quality controls and quality systems, WICHY has achieved many accolades; the recent one being BRC system certification for Coconut Water.

Presently, WICHY products are exported to prestigious clientele in Canada, United States of America, Jamaica, United Kingdom, France, Germany, Sweden, Netherlands, Austria, Switzerland, South Africa, India, Taiwan, Japan, Australia and New Zealand while exploring new markets to achieve more coverage internationally.

WICHY is fully geared to be your most trusted partner and supplier for coconut based products from Sri Lanka, meeting your specific commercial requirements through a personalized service.

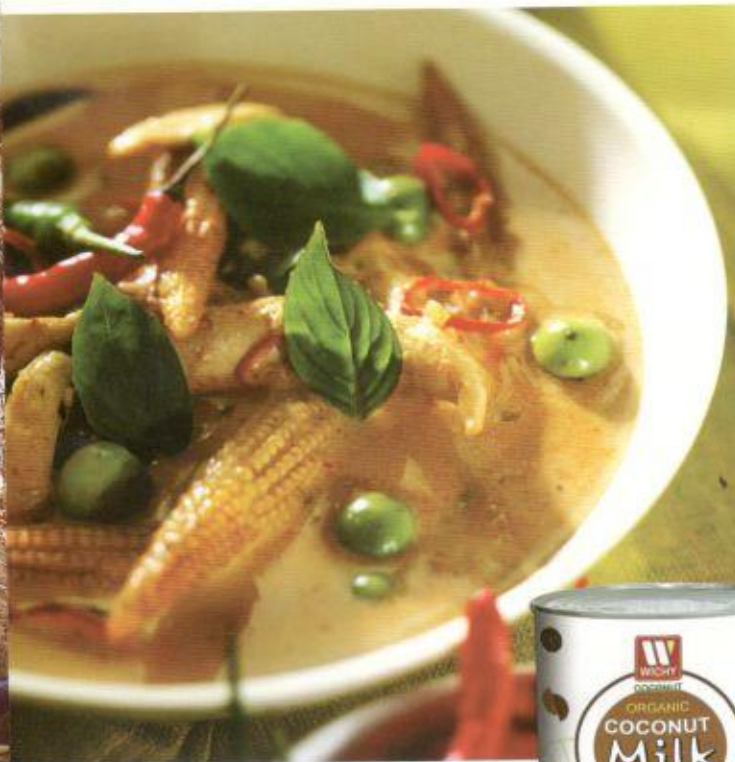
Savour the true flavour of unique Sri Lankan Coconut with WICHY.



SRI LANKA



WICHY Organic Coconut Milk



Product Description

The product shall be emulsion extract from endosperm (Kernel) of the matured coconut. The coconut milk is extracted using mechanical pressing and blended with some stabilizers and emulsifiers to maintain proper consistency and packed in hermetically sealed food grade metal cans and finally sterilized to achieve the commercial sterility. This product is prepared from organically certified coconuts and processed under EU, NOP, JAS, organic processing guidelines and ISO, BRC food safety guidelines. Wichy coconut milk is available in different fat content such as 6%, 8%, 10%, 12%, 14%, 17%, and 22%.

Uses

Coconut milk is mainly used for preparation of tropical cuisines. Wichy organic coconut milk is one of most flavorful milks, ideally suited as a culinary base. This coconut milk can be diluted with warm water and used for all gourmet foods, fruit cocktails, confectioneries.

Product Characteristics

- | | |
|-------------------|--|
| Appearance | - Milky homogenous liquid and free from foreign matter. |
| Flavour and Odour | - The product shall have a characteristics coconut flavour and pleasant odour. It shall be free from rancid, cheesy, soapy or other objectionable flavours and odours. |
| pH value | - 5-6 |
| Fat % | - 6 % to 22% |

Packaging

- | | |
|--------------------|--|
| Primary | - 3 piece tin plated can with EOE, Non EOE lids |
| Secondary | - 24 cans packed in brown liner 3 ply corrugated cartons |
| Net weight/Volume | - 400 ml, 3000 ml |
| No of ctns/ 20 FCL | - 1850 (44400 x 400 ml cans) |
| No of trays/20 FCL | - 3700 (44400 x 400 ml cans) |
| No of ctns/20 FCL | - 1080 (6480 x 3000 ml cans) |

Storage

Shelf Life

- Ambient temperature
- 2 years. Once the can is opened, keep in refrigerator and consume within 3 days

Nutritional Facts	Per 100g
Energy	120KCal
Carbohydrate	2.0g
Total sugar	0.0g
Sucrose	0.0g
Total fat	12.0g
Saturated fat	10.0g
Potassium	0.1g
Protein	1.0g
Sodium	26mg
Fiber	0.0g



WICHY Organic Creamed Coconut

Product Description

Creamed coconut is a semi-solid viscous product made with dried coconut, which passes through the colloidal mill. This is 100 % pure and contains no added food additives such as artificial flavours, colours, and preservatives.

Uses

In all products which require organic coconut cream or organic desiccated coconut, such as gourmet dishes, confectionery products, ice creams and dessert mixes, etc.

Product Characteristics

Appearance - Creamy without foreign matters except paring particles

Texture - Semi-solid liquid

Taste - Sweet and pleasant with strong coconut flavour

Color - Slightly yellowish, creamy colour

Odour - Pleasant odour, free from rancid odour.

Fat 68% (minimum)

Moisture 3 % (maximum)

Sulphate Residues Nil



Packaging

141g packets, 150g packets, 170g packets, 200g packets

141g x 40 per carton, 4600 (Reefer FCL 40 Ft)

150g x 40 per carton, 2600 (Dry FCL 20 Ft)

150g x 40 per carton, 2400 (Reefer FCL 20 Ft)

150g x 40 per carton, 4000 (Reefer FCL 40 Ft)

170g x 40 per carton, 2900 (Dry FCL 20 Ft)

170g x 40 per carton, 2400 (Reefer FCL 20 Ft)

200g x 40 per carton, 2600 (Dry FCL 20 Ft)

200g x 40 per carton, 2400 (Reefer FCL 20 Ft)

190 kg steel drums 70 /20 FCL

17 kg pail palletized 450 /20 FCL

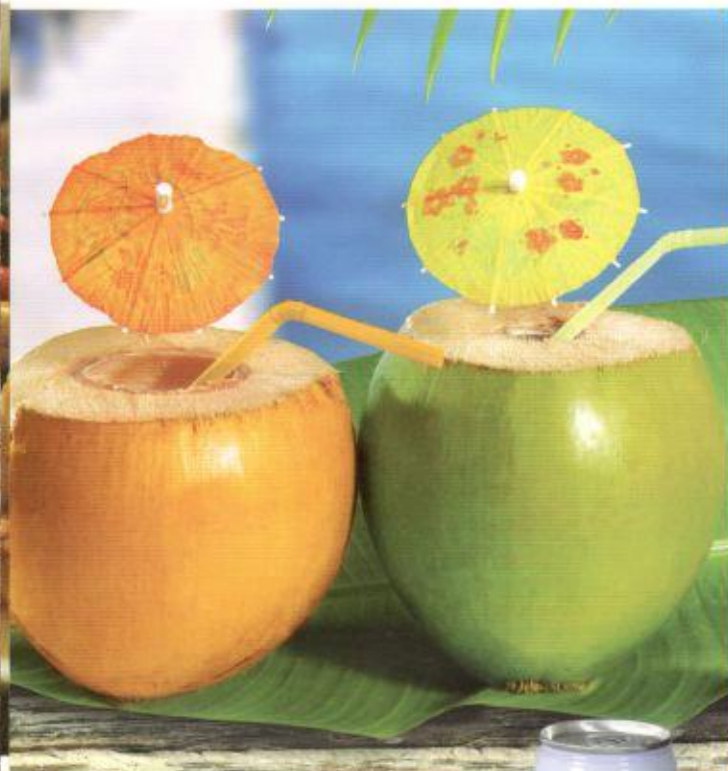


Shelf Life/Storage

Three years, keep in cool dry place away from direct sunlight, refrigerate after opening and consume within 3 days.

Nutritional Facts	Per 100g
Energy	710KCal
Carbohydrate	8.9g
Of which sugars	4.0g
Total fat	71.4g
Saturated fat	66.8g
Potassium	0.2g
Protein	8.0g
Sodium	13.59mg
Poly unsaturated fat	0.6g
Mono-unsaturated fat	4.0g
Iron	2.43mg
Dietary fibre	30.4g
Calcium	114.0mg

WICHY Organic Coconut Water



Product Description

WICHY ORGANIC COCONUT WATER from Sri Lanka is extracted from fresh Young Coconuts harvested from traditionally grown coconut estates those which are blessed with bountiful sunshine and rainfall throughout the year. The rich soil conditions in this tropical island make the Sri Lankan Coconut water very unique in taste.

Wichy's in-house technical expertise coupled with modern coconut water processing technology helps **WICHY ORGANIC COCONUT WATER** meet international quality standards.

Product is offered in four pack sizes; 250 ml, 330 ml easy open metal cans, 17 litre plastic pails and 200 litre steel drums.

Uses

It is consumed very much straight from the fruit. Apart from being a thirst quencher, it is a palatable, mild tasting and invigorating drink. It is known for medicinal properties and chemically has a host of minerals. WICHY organic coconut water is carefully prepared to retain these properties to a very great extent.

Product Characteristics

pH Value - 4.0 - 5.0

Brix Value - 4.5 - 5.0

Appearance - Characteristic to King Coconut Water

Colour - Characteristic to colour of King Coconut Water

Odour - Characteristic to the odour of King Coconut Water

Taste - Characteristic to the taste of King Coconut Water

Nutritional Facts	Per 100g
Energy	20.47 Kcal
Oil / Fat	0.0g
Carbohydrate	4.21g
Of which reducing sugar	4.1g
Sodium	14.1mg
Potassium	144.7mg
Protein	0.21g



Packaging

Primary - 330 ml, 250 ml, 3-piece tin-plated can with EOE SOT Lid.

Secondary - Brown liner 3 ply corrugated cartons.

330 ml x 24 cans per carton - 2400 (20 FCL)

250 ml x 24 cans per carton - 2600 (20 FCL)

Shelf Life

2 years in ambient conditions.

WICHY Organic Frozen Coconut Water Bulk (Pasteurized and Unpasteurized)

Product Characteristics

Extract coconut water hygienically from the nut, then Pasteurize or Unpasteurize and fill into food grade polyethylene sealed bags with spout (200 gauge LLDPE).

pH value - 4.00 to 5.00

Brix value-4.00 to 5.00

Packaging

Primary - Polyethylene sealed bag with spout
Gauge - 155 gauge LLDPE

Secondary - 17 kg food-grade plastic pails, wide mouth
185 kg food-grade steel drums.

17 kg plastic pail x 1 - 1080 (40 reefer FCL, Palletized)

185 kg steel drum x 1 - 70 (20 reefer FCL)

185 kg steel drum x 1 - 120 (40 reefer FCL)

Shelf Life

Pasteurized Coconut Water - 01 year
under frozen storage (-18°C)

Unpasteurized Coconut Water - 06 months
under frozen storage (-18°C)



WICHY Organic Coconut Water with Banana



Product Description

Coconut Water with Banana is a blend of Organic Coconut Water and clarified Organic Banana Juice. It doesn't contain any artificial flavours, colours, preservatives and sweeteners.

Uses

Wichy Organic Coconut Water with Banana can be used as a beverage and thirst quencher and this product consists of a considerable amount of Potassium. Therefore the product is especially helpful for sportmen/women.

Product Characteristics

pH Value - 4.5 - 4.6

Brix Value - 7.0 - 8.0

Colour - pale yellow colour

Odour - dominant banana odour

Taste - blend taste of coconut water & banana

Nutritional Facts	Per 100g
Energy	24.4 Kcal
Protein	0.2g
Carbohydrate as total sugar	5.9g
Total sugar	5.9g
Sodium	39.9mg
Potassium	175.4mg
Vitamin C	0.6mg
Iron	0.5mg



Packaging

Primary - 330 ml, 250 ml, 3-piece tin-plated can with EOE SOT Lid.

Secondary - Brown liner 3 ply corrugated cartons.

330 ml x 24 cans per carton - 2400 (20 FCL)

250 ml x 24 cans per carton - 2600 (20 FCL)

Shelf Life/Storage

2 years in ambient conditions.

WICHY Organic Pina colada

Product Description

Organic Pina colada is the favorite alcohol cocktail made with rum and a fruit base. The ingredients for this fruit base is organic coconut milk and organic pineapple juice which together is called Organic Pina colada-Mix. Pina colada presumably has its origin from Latin America and the West Indies. While its popularity remains there, it is now widely consumed throughout the USA and in Europe, where its acceptance has spread from the Mediterranean belt, including Italy, Spain and France to the more Northern, UK, Netherlands and Scandinavia.

No added flavours or colourings. Made from 100% pure organic coconut and natural organic pineapple juice.

Uses

Ideal base for alcohol cocktails and liquors. Also can be used as ready-to-serve drink.

Product Characteristics

pH Value - 4.0 - 4.2

Brix Value - 12%-13%

Appearance - Characteristic to the blend of Coconut Milk and Pineapple

Colour - Characteristic to the colour of blend of Coconut Milk and Pineapple

Odour - Characteristic to the odour of blend of Coconut Milk and Pineapple

Taste - Characteristic to the taste of blend of Coconut Milk and Pineapple

Packaging

Primary - 330 ml, 250 ml, 3-piece tin-plated can with EOE SOT Lid.

Secondary - Brown liner 3 ply corrugated cartons.

330 ml x 24 cans per carton - 2400 (20 FCL)

250 ml x 24 cans per carton - 2600 (20 FCL)

Shelf Life/Storage

2 years in ambient conditions.



Nutritional Facts	Per 100g
Energy	85.2 Kcal
Protein	0.9 g
Total fat	4.4 g
Saturated fat	4.2 g
Carbohydrate	10.5 g
Of which reducing sugar	2.0 g
Of which sucrose	5.1 g
Fiber	1.0 g
Sodium	66.5 mg
Calcium	18.5 mg

WICHY Organic Coco Juice

ENJOY THIRST!
nature's way



WICHY Organic Coco Juice



Product Description

Pineapple - Wichy Organic Coco Juice and pineapple made from 100% pure natural coconut and fresh pineapple juice. It has the delicate taste of coconut and pineapple.

Strawberry - Wichy Organic Coco Juice and strawberry made from 100% pure natural coconut and fresh strawberry juice. It has the delicate taste of coconut and strawberry.

Mango - Wichy Organic Coco Juice and mango made from 100% pure coconut and organic mango juice. It has the delicate taste of coconut and the sharp mango taste.

Banana - Wichy Organic Coco Juice and Banana made from 100% pure coconut and Organic Banana juice. It has the delicate taste of coconut and the sharp Banana taste.

Plain - Wichy Organic Coco Juice Plain made from 100% organic coconut milk. It has the delicate taste of pure coconut milk.

Packaging

Primary - 330 ml, 250 ml, 3-piece tin-plated can with EOE SOT Lid.

Secondary - Brown liner 3 ply corrugated cartons.
330 ml x 24 cans per carton - 2400 (20 FCL)
250 ml x 24 cans per carton - 2600 (20 FCL)

Shelf Life/Storage

2 years in ambient conditions.

WICHY Organic Virgin Coconut Oil



Product Description

Wichy Organic Virgin Coconut Oil obtained from the fresh matured kernel of organic coconut, by cold press method.

Wichy guarantees there are no preservatives, no chemical refining, no bleaching, no deodorization or use of chemicals in the manufacturing process of virgin oil.

Health Promoting Characteristics

- Increases level of energy
- As a nutraceutical and functional food
- As a hair conditioner
- As a body oil or substitute for moisturizing lotion

Uses

Wichy organic virgin coconut oil can be considered as one of the healthiest oils in the world. It has a high content of vitamins and minerals. It is fit for consumption without the need for further processing. It also helps promote heart health, by maintaining normal cholesterol levels and even supports weight loss. Virgin coconut oil is commonly used in cooking, especially when frying. It may also be used for making margarine and cosmetics.



Product Characteristics

Colour 25mm cell on the lovibond colour scale in Y+ 5R, not deeper than

Relative density at 30°C	- 0.05
Moisture % (Matter volatile at 105°C, max)	- 0.920
Insoluble impurities % by mass, max	- 0.2
Free fatty acids, calculated as lauric acid % by mass, max	- <0.05
Iodine value	- 0.04
Saponification value	- 6.4
Unsaponifiable matter % by mass, max	- >255
	- <0.2

Packaging

Primary - 230 ml, 500 ml, 970 ml glass bottles	
Secondary - 5 ply brown liner corrugated carton	
230 ml x 12 per carton	- 3780 (20 FCL)
300 ml x 12 per carton	- 3120 (20 FCL)
500 ml x 6 per carton	- 4000 (20 FCL)
970 ml x 6 per carton	- 2365 (20 FCL)
185 kg x 1 steel drums	- 70 (20 FCL)
920 kg x 1 IBC Totes	- 20 (20 FCL)
920 kg x 1 IBC Totes	- 26 (40 FCL)

Shelf Life/Storage - 24 months, store in cool dry place, away from direct sunlight.

Nutritional Facts	Per 100g
Energy	3761KJ/899 kcal
Total fat	99.88g
of which Saturated	
Caprylic-C8	8.7g
Capric-C10	5.9g
Lauric-C12	50.9g
Myristic-C14	19.8g
Palmitic-C16	7.2g
Stearic-C18	2.4g
Mono unsaturated	4.2g
Poly unsaturated	0.6g
Cholesterol	0.0mg
Carbohydrate	0.0g
of which sugars	0.0g
Protein	0.0g
Sodium	0.0g



WICHY Organic Coconut Vinegar

Product Description

The word vinegar has been derived from the old french word "Vinaigre," vin (wine) and aigre (sour). **Wichy Coconut Vinegar** is prepared using coconut water by alcoholic fermentation and acetous fermentation.

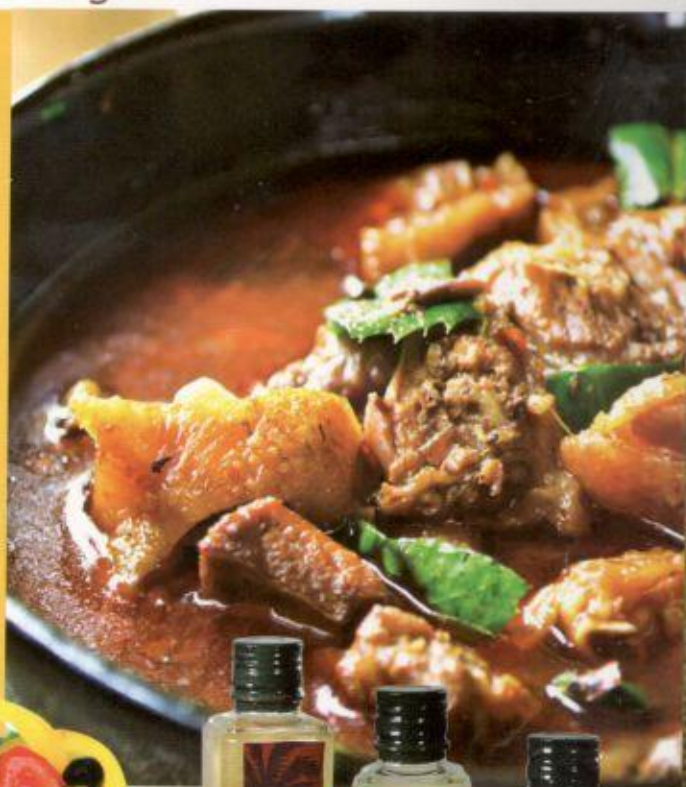
Wichy Organic Spiced Vinegar is processed under strict hygienic conditions using coconut water by alcoholic fermentation and acetous fermentation and added organically certified spice Mixture extracts to impart spice aroma and flavour.

Uses

Use as a natural preservative for pickling of vegetables and fruits, mix with salad, tenderizing of hard meat in cooking.

Product Characteristics

Total acidity	4% (min)
Total solid	1% (max)
Alkaline oxidation value	80 (min)
Iodine value	160 (min)
Residual ethyl alcohol	1% (min)
Permanganate oxidation value	750 (min)



Packaging

Primary - 400 ml glass bottles.

Secondary packaging - Brown liner 5 ply corrugated carton.
400 ml x 12 per carton - 2736 (20 FCL)

Shelf Life/Storage - 2 years in ambient temperature.

Nutritional Facts Per 2 Tbsp (30ml)

Amount	% Daily Value	
Calories	0	
Fat	0g	0%
Sodium	0mg	0%
Carbohydrate	0g	0%
Protein	0g	



WICHY Organic Desiccated Coconut



Wichy Organic Desiccated Coconut is manufactured in a very hygienic and state-of-the-art, modern central processing plant at Wariyapola, North Western Province in Sri Lanka.

Product Description

Organic Desiccated Coconut (DC), sometimes referred to as Coconut Powder, is a dehydrated form of granulated white coconut meat from freshly selected organically certified mature coconut kernels (the white flesh inside coconuts). It is white in colour and available in the standard granular forms of Fine, Medium and Fancy Cut. Also available in conventional and organic form.

Uses

Organic Desiccated Coconut is perfect for use in various industries that require the natural exotic taste of coconut. It is widely used in the Confectionery and Bakery trades as topping for cakes and pastries, fillers for candy bars, chocolates, etc. Many households popularly use DC in the preparation of numerous dishes as well.

Product Characteristics

- Fat and Oil content (% by mass) - 68.0% (Minimum)
- Moisture Content (% by mass) - 3% (Maximum)
- Sulphite residue (So₂) - Nil
- Appearance and Colour - Natural white, free from any other discolouration

- Flavour and Aroma - Tasty, sweet and pleasant, rich in coconut flavour and free from cheesy, smoky, soapy, sour or other undesirable flavours
- Extraneous matter - Free from extraneous matter
- Grades - Fine, medium and fancy cuts

Packaging

- **Packing Units** - 1kg, 10kg, 25kg and 50kg packs
- **Primary packaging** - Low Density Poly Ethylene (LDPE) inner liner (heat sealed)
- **Secondary packaging** - 5-ply kraft paper bag (machine stitched)
 - 25kg 480 bags per 20 FCL
 - 50kg 240 bags per 20 FCL
 - 50kg 520 bags per 40 FCL

Shelf Life/Storage - 1 year in ambient conditions.

Nutritional Facts	Per 100g
Energy	653Kcal
Protein	8.0g
Total fat	66.5g
Saturated fat	63.0g
Trans fat	0.0g
Sodium	19.0mg
Fiber	13.2g
Carbohydrate	5.5g
Iron	2.2mg
Calcium	7.14mg
Potassium	580mg
Vitamin A	256µg



WICHY Organic Raw-Extra Virgin Coconut Oil

Product Description

This is a premium quality product which is processed with the least amount of processing steps, so that the natural vitamin E, antioxidants and fresh natural coconut taste and the flavour are retained.

Fresh coconut meat is grated and cold pressed to produce coconut milk. The milk centrifuged is named as decanting centrifuge method to separate the oil, which has a very light texture and pleasant coconut aroma, since no heat at all is throughout the process. Research and clinical trials conducted by experts have revealed that virgin coconut oil has enormous benefits for human health.

Health Promoting Characteristics

- Increases level of energy
- As a nutraceutical and functional food
- As a hair conditioner
- As a body oil or substitute for moisturizing lotion

Uses

Wichy organic virgin coconut oil can be considered as one of the healthiest oils in the world. It has a high content of vitamins and minerals. It is fit for consumption without the need for further processing. It also helps promote heart health, by maintaining normal cholesterol levels and even supports weight loss. Virgin coconut oil is commonly used in cooking, especially when frying. It may also be used for making margarine and cosmetics.

**Absolutely
No Heat**

Product Characteristics

Colour 25mm cell on the lovibond colour scale in Y+ 5R, not deeper than

- 0.05
- 0.920
- 0.2
- <0.05
- 0.04
- 6.4
- >255
- <0.2

Relative density at 30°C

Moisture % (matter volatile at 105°C, max)

Insoluble impurities % by mass, max

Free fatty acids, calculated as lauric acid % by mass, max

Iodine value

Saponification value

Unsaponifiable matter % by mass, max

Packaging

Primary - 230 ml, 500 ml, 970 ml glass bottles

Secondary - 5 ply brown liner corrugated carton

230 ml x 12 per carton - 3780 (20 FCL)

500 ml x 6 per carton - 4000 (20 FCL)

970 ml x 6 per carton - 2365 (20 FCL)

920 kg x 1 IBC Totes - 26 (40 FCL)

920 kg x 1 IBC Totes - 20 (20 FCL)

Shelf Life/Storage - 24 months store in cool dry place away from direct sunlight



Nutritional Facts	Per 100g
Energy	3761KJ/899 kcal
Total fat	99.88g
of which Saturated	
Caprylic-C8	8.7g
Capric-C10	5.9g
Lauric-C12	50.9g
Myristic-C14	19.8g
Palmitic-C16	7.2g
Stearic-C18	2.4g
Mono unsaturated	4.2g
Poly unsaturated	0.6g
Cholesterol	0.0mg
Carbohydrate	0.0g
of which sugars	0.0g
Protein	0.0g
Sodium	0.0g

WICHY Sweetened Creamed Coconut



Product Description

Sweetened creamed coconut is a thick viscous product obtained from coconut milk blended with refined sugar and stabilizers by concentration.

Uses

Can be used for Fruit Salad Dressing, confectionery, mixed with Fruit Juices and preparation of beverages, etc.

Product Characteristics

Colour - Colourless glassy appearance

Odour - Pleasant coconut odour

Texture - Thick viscous having glassy effect

pH - 5.5-6.0

Brix - 55°-60°

Nutritional Facts	Per 100g
Energy	391Kcal
Total carbohydrate	36g
Total fat	25.1g
Trans fat	0.0g
Saturated fat	23.3g
Sugar	36.6g
Protien	5.3g
Cholesterol	0g
Dietary fiber	1.0g
Sodium	26.7mg
Iron	1.15mg
Calcium	6.0mg
Potassium	0.26g



Packaging

Primary - 400 ml, 3-piece cans

Secondary - Brown liner 3 ply corrugated cartons.

400 ml cans x 24 - 1850 (20 FCL)

400 ml cans x 12 (tray) - 3700 (20 FCL)

Shelf Life/Storage

2 years in ambient conditions.

WICHY Organic Coconut Syrup

Product Description

Wichy organic coconut syrup is processed under strict hygienic conditions, using sap extracted from the inflorescence of the coconut palm and boiled to a syrup. This is 100% natural and does not contain any additives such as preservatives, stabilizers, emulsifiers, artificial flavours and colourings. Also coconut syrup is rich in vitamins, minerals and amino acids. According to several glycaemic index analyses, results from research institutes in the Philippines, USA and Japan have revealed that coconut syrup has low glycaemic index (35 - 40). Therefore coconut syrup is beneficial for diabetics and non-diabetics as well. Coconut syrup has many uses such as sweetener of confectionery, topping for cultured dairy products and fruit salads.

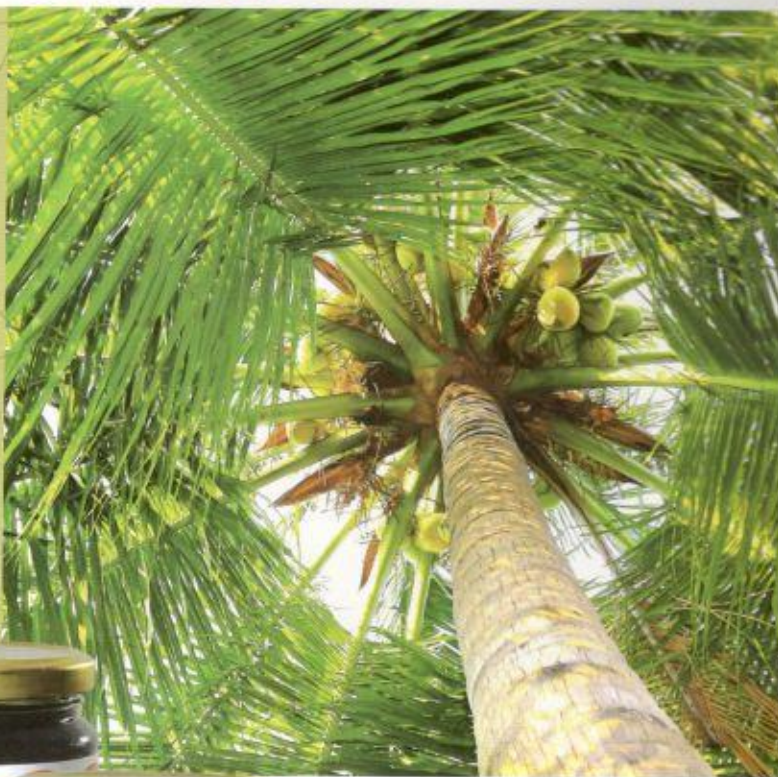
Product Characteristics

Taste - Sweet taste with slight acidity

Color - Brown to dark brown

Odour - Pleasant nutty aroma

Texture - Viscous, smooth and free from extraneous matter.



Physical & Chemical Characteristics

Brix	68° (min)
Water content by mass	30
Acidity as acetic acid	0.5
Total ash content by mass	1.5
Matter insoluble in water by mass	0.5
Acid insoluble ash by mass	0.15

Packaging

Primary - 230 ml, 300 ml, 970 ml glass bottles.

Secondary - Brown liner 5ply corrugated cartons.

230 ml x 12 per carton, 3780 (20 FCL)

300 ml x 12 per carton, 3120 (20 FCL)

970 ml x 6 per carton, 2365 (20 FCL)

Shelf Life & Storage - 24 months, store in cool dry place, away from direct sunlight.

Parameter	Per 100g
Energy	1339KJ/320kcal
Total Fat	0g
Of Which Saturates	0g
Carbohydrate	79.2g
Of Which Sugars	78.9g
Protein	1.0g
Calcium	2.2g
Iron	0.6mg

WICHY Organic Coconut Butter



Product Description

Viscous semi-solid liquid obtained from desiccated coconut passed through colloid mill.

Product Characteristics

- Appearance - Creamy, semi- solid liquid. Free from foreign matter, except pairing particles
- Colour - Creamy to slightly yellowish colour
- Taste - Characteristic coconut taste
- Odour - Rich in coconut flavour

Packaging

- Primary Pack - Glass Bottles
- Tertiary pack - Brown liner corrugated carton or Shrink-wrapped trays
- Net weight - 230 g

230 g x 12 per carton (20FCL) - 3780

Nutritional Facts	Per 100g
Energy	710KCal
Carbohydrate	8.9g
Of which sugar	4.0g
Total fat	71.4g
Saturated fat	66.8g
Potassium	0.2g
Protein	8.0g
Fiber	30.4g
Sodium	13.59mg
Poly unsaturated fat	0.6g
Mono-unsaturated fat	4.0g
Iron	2.43mg
Calcium	114.0mg



Shelf Life/Storage - 36 months in ambient conditions. Refrigerate after opening and consume within 3 days

WICHY Organic Sweetened Condensed Coconut Milk

Product Description

Organic Sweetened Condensed Coconut Milk is a sweet thick product produced with blend of coconut milk with organic sugar, guar gum, xanthan gum and Citric Acid by concentration

Product Characteristics

Appearance - Glassy appearance
Flavour - Characteristic to the pleasant coconut flavour
Taste - Sweet
Colour - Whitish color to Ivory

Physical & Chemical Characteristics

pH 5.5 – 6.0
Brix 55° – 60°

Packaging

Primary - 3 piece tin plated can with EOE lids
Secondary - 24 cans pack in brown liner 3 ply corrugated cartons
Net weight/Volume - 225 g, 460 g
No of ctns/ 20 FCL - 2992 (71808 x 225g cans)
No of ctns/40 FCL - 4076 (97824 x 225g cans)
No of ctns/20 FCL - 1800 (43200 x 460g cans)



Shelf Life - 2 years. Once the can is opened, keep in refrigerator and consume within 3 days

Storage - Ambient temperature

Nutritional Facts	Per 100g
Energy	391Kcal
Total Carbohydrate	36g
Total fat	25.1g
Trans Fat	0.0g
Saturated Fat	23.3g
Sugar	36.6g
Protien	5.3g
Cholesterol	0g
Dietary Fiber	1.0g
Sodium	26.7mg
Iron	1.15mg
Calcium	6.0mg
Potassium	0.26g

WICHY Organic Coconut Flour

Product Description

Coconut flour is produced from fresh finely grated or ground coconut meat with or without parings, or coconut sapal or defatted coconut kernels.

Uses

Sprinkling some in shakes and smoothies, or even in water, to add fiber, protein and coconut flour. Can be used as a thickener in soups, gravy and sauces, baking bread, muffins, cakes, and cookies. Coconut flour in pancakes and waffles, sweet, moist and delicious corn bread.

An egg bath followed by a dredging in coconut flour and a coating of coconut flakes to make delicious fried chicken (or fried shrimp or fish).

Product Characteristics

Colour & Appearance	- Creamy to light brown colour, fine powder, free from burnt, discoloured particles
Taste	- Characteristic to mild Coconut taste
Flavour	- Typical nutty flavour
Moisture	- 4 % (Max)
Fat	- 12- 15%
Free fatty acid	- 0.2 % (max)

Packaging

Primary - LLDPE liner (Heat Sealed), 500 g laminated pouches

Secondary - 4 Ply craft paper bag

Net weight - 25 kg, 10 kg, 500 g

No of 10 kg bags (20 FCL), palletized 1200 (120 b/pallet)

10 kg bags (20 FCL) pack to the floor 2000 bags

25 kg (20 FCL) pack to the floor 700 bags

Shelf Life One year

Storage Store in cool dry place away from direct sunlight

Nutritional Facts	Per 100g
Energy	365.2Kcal
Carbohydrate	37.1g
of which sugar	12.6g
Total fat	16.8g
Trans fat	0.0g
Saturated fat	16.0g
Protein	16.4g
Fiber	18.2g
Sodium	44.6mg
Calcium	32.9mg
Vitamin A	320µg



WICHY Organic Coconut Chips (Raw and Toasted)

Product Description

Product obtained by drying the granulated/shredded white meat of coconut kernel. Available in toasted chips also.

Product Characteristics

- Appearance** - Free from other discolouration and free from any burn, discoloured particles, except pairing particles.
- Taste** - Characteristic to the coconut taste; shall not be cheesy, smoky, soapy, sour and other undesirable flavours
- Colour** - Natural white, Toasted chips as pale Brown Colour
- Odour** - Characteristic to the coconut odour and free from any objectionable odours
- Texture** - Dry crispy texture
- Oil content by** - 68.0 % (Min)
- Moisture by** - < 4.0 %
- Particles size** - Length 11- 52 mm, Width 7- 10 mm, thickness 0.4 - 0.6 mm
- Sulphite residue** as SO₂ - Nil



Packaging

- 10 kg box/20 FCL - 300 cartons (palletized)
- 420 cartons (pack to the floor)

Shelf Life/Storage

One year in Ambient Conditions



Nutritional Facts	Per 100g
Energy	653Kcal
Protein	8.0g
Total Fat	66.5g
Saturated fat	63.0g
Trans fat	0.0g
Sodium	19.0mg
Fiber	13.2g
Carbohydrate	5.5g
Iron	2.2mg
Calcium	7.14mg
Potassium	580mg
Vitamin A	256µg





Our Processing Units







Pioneer in processing to perfection...





COCONUT

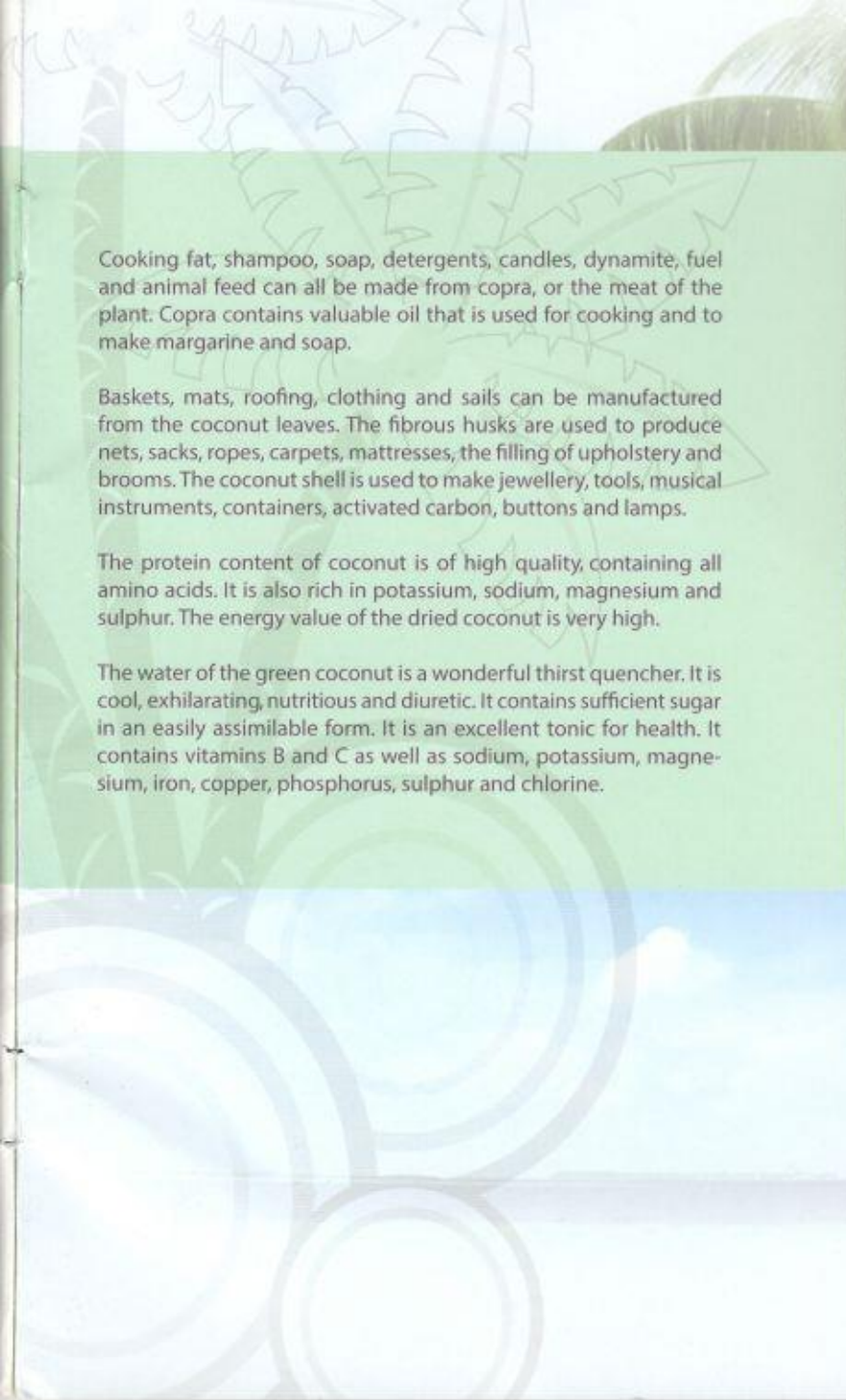
a tree with a thousand uses...

The coconut palm is rightly called a "Tree with a thousand uses". Perhaps no other tropical tree is considered to offer such a variety of uses to human needs.

Throughout the world people enjoy consuming coconut in the form of milk, cream, desiccated, oil, vinegar, wine, water, and also the crisp, juicy chunks of fresh coconut meat.

A large variety of sweets use coconut meat in various forms, while desiccated coconut is used in continental desserts like pudding, custards and trifles. Coconut is also used in many curries, both vegetarian as well as non-vegetarian, while mouth-watering coconut chutneys are an all-time favourite.

It is also considered a sacred fruit.

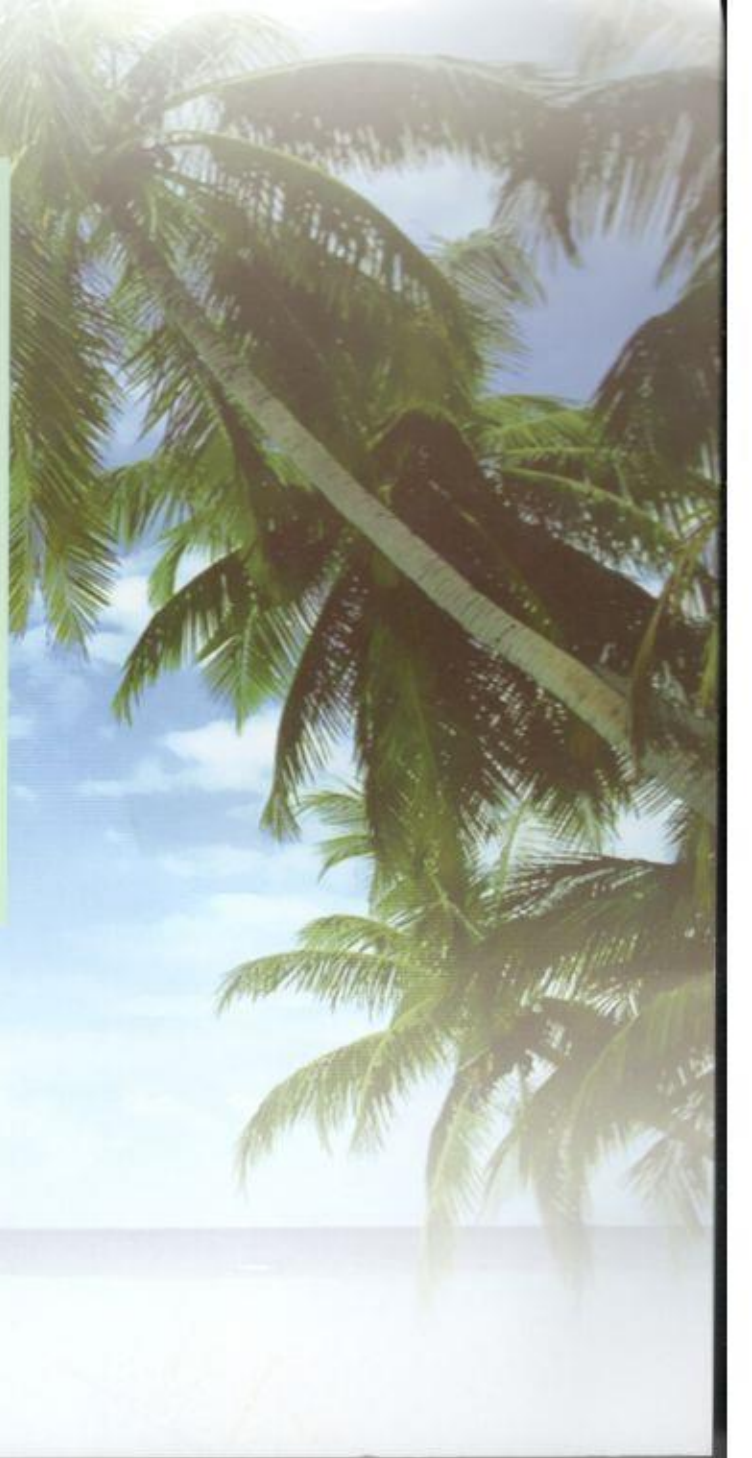


Cooking fat, shampoo, soap, detergents, candles, dynamite, fuel and animal feed can all be made from copra, or the meat of the plant. Copra contains valuable oil that is used for cooking and to make margarine and soap.

Baskets, mats, roofing, clothing and sails can be manufactured from the coconut leaves. The fibrous husks are used to produce nets, sacks, ropes, carpets, mattresses, the filling of upholstery and brooms. The coconut shell is used to make jewellery, tools, musical instruments, containers, activated carbon, buttons and lamps.

The protein content of coconut is of high quality, containing all amino acids. It is also rich in potassium, sodium, magnesium and sulphur. The energy value of the dried coconut is very high.

The water of the green coconut is a wonderful thirst quencher. It is cool, exhilarating, nutritious and diuretic. It contains sufficient sugar in an easily assimilable form. It is an excellent tonic for health. It contains vitamins B and C as well as sodium, potassium, magnesium, iron, copper, phosphorus, sulphur and chlorine.



Our Global Presence



Canada • United States of America • Jamaica • United Kingdom • France • Germany • Sweden
Netherlands • Austria • Switzerland • South Africa • India • Taiwan • Japan • Australia • New Zealand



Wichy Plantation Company (Private) Limited

Head Office

107, UDA Industrial Estate,
Katuwana, Homagama,
Western Province, Sri Lanka.

Central Processing Plant

Rambawewa, Kanaththewewa, Wariyapola,
North Western Province, Sri Lanka.

Coconut Water Plant

No. 25, Templeburg Industrial Estate,
Panagoda, Homagama,
Western Province, Sri Lanka.

Tel : +94 (0) 11 5627521

Fax : +94 (0) 11 2891693

Email : kushan@wichy.com

www.wichy.com